

VITA34

# HEALTHCARE FOR THE FUTURE

With the storage of stem cells from the umbilical cord you enable a more vital life for your child.



# FIVE REASONS

## TO SET UP A STEM CELL DEPOSIT

### OUR TOPICS

|   |    |
|---|----|
| Stem cells are the building blocks of life          | 6  |
| So important are stem cells from the umbilical cord | 8  |
| Stem cells from cord blood                          | 10 |
| Stem cells from cord tissue                         | 12 |
| The Vita 34-all-roundService                        | 15 |
| Vita 34 - certainly a good partner                  | 16 |
| FAQs on how to set up a stem cell deposit           | 18 |

We enclosed a leaflet in the inside back cover containing an overview of our latest products, services, and prices as well as our terms and conditions and the order form.

---

# 1

**The stem cells from your child's umbilical cord are unique.** They are particularly young, vital, and easy to collect.

---

# 2

**Stem cells from the umbilical cord are almost non-perishable.** Cryo-preservation maintains their valuable properties.

---

# 3

**Stem cells are the focus of scientific research.** New possible therapies are constantly tested and introduced in clinical studies worldwide.

---

# 4

**Stem cells from the umbilical cord are applied successfully.** They are used to treat numerous diseases already.

---

# 5

**Stem cells are a valuable source material for medical cell therapy.** Patient's own cells are a key to the personalized medicine of the future.





# DEAR PARENTS TO-BE,

you will soon hold your little darling in your arms. All our best wishes and the very best of luck to you. At the birth, you can take sustainable preventive healthcare measures for your child by storing the stem cells from your baby's umbilical cord.

The umbilical cord is a very special and easy accessible source to collect stem cells. They are never again as numerous, as young, as vital, and as healthy as they are at birth. The valuable cells are collected at the delivery, at no risk at all and completely painless for mother and child. A stem cell deposit means a loving and responsible decision for your child's health care. Make use of this unique opportunity at birth!

---

## REFERENCES

You will receive an overview of all references at [www.vita34.de/referenzen/](http://www.vita34.de/referenzen/)



# STEM CELLS ARE THE BUILDING BLOCKS OF LIFE

An entire human being develops from the initial stem cell - the fertilized egg. Through reproduction and differentiation, they form over 200 different cell types: e.g.: blood, muscle, or nerve cells. Even after the birth, stem cells make us grow further. They control the regeneration and repair of injuries and diseases. Thus, they accompany us throughout our whole lives.

Stem cells have been applied in the treatment of serious diseases for 60 years. Successful stem cell therapies are not a vision for the future and are used in the treatment of numerous diseases.

Many conditions, like joint arthrosis, cardiovascular diseases or type 2 diabetes, occur only when you get older. Stem cells bear a great potential to treat such diseases as well.



STEM CELLS ARE ALREADY BEING USED TODAY IN THE TREATMENT OF MANY DISEASES IN ESTABLISHED FIELDS OF APPLICATION OR CLINICAL TRIALS

- Defects of the immune system (e.g. Wiskott Aldrich syndrome)
- Autoimmune diseases and metabolic disorders (e.g. diabetes mellitus type 1, multiple sclerosis)
- Oncological diseases (e.g. multiple myeloma, neuroblastoma)
- Hematological diseases (e.g. aplastic anemia)
- Sporting and accident injuries (e.g. cartilage and muscle damage)
- herapies of neurological and neurological degenerative diseases (e.g. Alzheimer's, Parkinson's)
- Brain damage (e.g. cerebral palsy, trauma)





## SO IMPORTANT ARE STEM CELLS FROM THE UMBILICAL CORD

In the last third of the pregnancy, the baby's stem cells start to migrate through the blood stream into the bone marrow and the organs. This is the reason, why its blood circulation contains so many vital stem cells, millions of them in the umbilical cord.

Stem cells make sure that our bodies are able to regenerate for a lifetime. For instance, the cells of the villi are renewed every week, the red blood cells regenerate every four months, our bones at least every ten years.

# THE BEST TIME TO SECURE STEM CELLS IS THE BIRTH.



## GOOD TO KNOW

- Cord blood is rich in stem cells.
- It is already applied routinely.
- It is available promptly in case of need.

## STEM CELLS FROM THE CORD BLOOD

The collection of umbilical cord blood is uncomplicated and entirely without risk for mother and child. The umbilical cord is cut and then punctured to collect the remaining blood from the placenta and umbilical cord. The collected blood is not only rich in blood stem cells, but also contains stem cells for connective tissue, blood vessels, and other blood ingredients that have not been examined sufficiently yet. These cells would e.g. be able to replace the hematopoietic system of a child completely.

Umbilical cord blood was applied in the treatment of hematopoietic disorders, the correction and regeneration of the immune system, the stimulation of hematopoiesis, as well as in case of infantile brain damage and diabetes mellitus type 1.



SECURE THE STEM CELLS FROM UMBILICAL BLOOD WITH »VITAPLUS«

read more on the leaflet in the inside back cover



## STEM CELLS FROM CORD TISSUE

The special stem cells from the tissue of the umbilical cord can be stored, too. This is where the concentration of mesenchymal stem cells (MSC) is particularly high. MSC from other tissue sources are applied already, e.g. to treat joint and cartilage diseases (like arthrosis) or dysfunctions of the immune system (like multiple sclerosis).

MSC are used also to grow new tissue for regenerative medicine. Therefore, they will be helpful in the creation of functioning organs. Stem cells from umbilical cord tissue are furthermore able to inhibit or prevent unwanted reactions of the immune system. Thus, e.g. rejections after transplantation procedures can be specifically treated. Another advantage is that MSC can be used potentially within the family (e.g. for siblings or parents).

### GOOD TO KNOW

MSC are used in sports and accident medicine.

They are suitable for the treatment of joint and cartilage diseases.

They have the potential to be used for treatment within a family.



SECURE THE STEM CELLS FROM UMBILICAL CORD TISSUE WITH »VITAPLUSCORD«

Read more on the leaflet in the inside back cover





# THE VITA 34 ALL-ROUND SERVICE

## Vita 34 customer service

Our Vita 34 customer service is always there for you: If you want to know about possible diseases, previous applications, or the relevance of previous diseases, if you need help in completing medical documents or discussing the findings of the numerous quality tests. Our experts from the fields of medicine and biology will provide you with professional advice and assist you in all medical matters regarding your stem cell deposit. Call us from Monday to Friday between 8 a.m. and 7 p.m. (free of charge) or write an email to [kundenservice@vita34.de](mailto:kundenservice@vita34.de) or [kundenservice@vita34.at](mailto:kundenservice@vita34.at).

## Information events

Vita 34 consultants inform about the preventive medical care by means of stem cell deposits in many German cities. Agree your personal appointment or search for events in your vicinity at [www.vita34.de/veranstaltungen](http://www.vita34.de/veranstaltungen) or [www.vita34.at/veranstaltungen](http://www.vita34.at/veranstaltungen).

## Glass laboratory

Take a look behind the scenes and watch the storage process live. At our unique glass stem cell laboratory, you can follow the procedure through safety glass.

## Vita 34 customer portal

You can easily place your order online in the customer portal of Vita 34. You will find all the information concerning the stem cell deposit of your child. You can view invoices and orders, change personal data, or communicate with the customer service: <https://portal.vita34.de>.



0800  
034 00 00  
GERMANY

00800  
034 00 000  
AUSTRIA



# VITA34 — CERTAINLY A GOOD PARTNER

We have been storing cord blood since 1997 and are therefore the most experienced and largest stem cell bank for individual preventive medical care in the German-speaking countries. Specialized bio-chemists, biologists, and bio-engineers, and physicians as well as the medical-technical assistants make Vita 34 the number one in Germany for stem cells from cord blood and cord tissue.

Quality and safety are the top priorities of Vita 34. About 150 employees from the divisions of quality assurance, distribution, marketing, administration, and laboratory are responsible for your safety at the highest level.

As measured by applications in clinical treatment attempts and studies, Vita 34 is the most experienced private stem cell bank in Europe.

Vita means life. The number 34 stands for the cell-surface molecule CD34, which characterizes hematopoietic stem cells. The name Vita 34 reflects the company's vision of protecting life by storing stem cells.

More than 230,000\* customers from Germany and 20 other countries already provided for their children's health by means of a Vita 34 stem cell deposit.

## CHOOSE VITA 34 AND GET FIRST-CLASS SERVICES

### • Comprehensive licenses

Vita 34 owns comprehensive official licenses regarding the release of umbilical cord blood. Depending on which product you choose, the deposit can be applied to your child, its siblings, and for donation.

### • Detailed anamnesis and evaluation

Vita 34 assumes the careful recording and evaluation of the medical history of your family as required by the health authorities. This is done by our medical staff and is intended for your safety in case of application.

### • Collection of stem cells by trained personnel

Vita 34 makes sure that your birthing clinic complies with the requirements of pharmaceutical law regarding the collection of stem cells from umbilical cord blood and trains midwives and physicians on location.

### • Transport by special courier on 365 days a year

Vita 34 guarantees the transportation of umbilical cord blood and tissue to the Vita 34 laboratory on every day of the year without any exception.

### • Processing in clean room (GMP standard)

The umbilical cord blood and tissue is processed at the Vita 34 safety laboratory according to GMP standard (GMP: Good Manufacturing Practice – the highest quality standard for pharmaceutical manufacturers). This includes also comprehensive quality tests in line with official specifications.



### • Preservation

Vita 34 provides for the computer-controlled cryo-preservation in freezing bags developed particularly for this purpose. Your stem cell deposit will be stored at approximately minus 180 degrees Celsius.

### • Reliable long-term storage

Vita 34 guarantees the reliable long-term storage so that the stem cells are available, when needed, in the best quality even after years, complying with all quality standards and safety requirements in line with the strict official specifications.

### • Storage of whole blood in view of future possibilities

Vita 34 intentionally opts for the storage of whole blood, because separating the stem cells from the blood prior to the storage may cause the loss of valuable cells.

### • Help for sick brothers and sisters

Since 2002, Vita 34 has been supporting the option of siblings most probably helping each other with their umbilical cord blood through the "sibling initiative". For instance, in case of leukemia, doctors rather apply the stem cells of healthy siblings than the patient's own. Vita 34 therefore stores the cord blood of a healthy newborn for five years at no extra charge, if (according to the doctor's certificate) it may be used to treat a sick brother or sister. Cord blood stored with Vita 34 has been used for siblings several times already.

# FAQS ON HOW TO SET UP A STEM CELL DEPOSIT

1

## HOW EXACTLY ARE STEM CELLS FROM THE UMBILICAL CORD COLLECTED?

Medical staff was trained by Vita 34 in the successful collection in almost all German and Austrian maternity clinics: After the umbilical cord was cut, the cord blood is collected in a blood bag, the umbilical cord is cut at the placenta and placed in a special container. Both are then packed into the temperature-controlled Vita 34 collection package and the necessary reports and documents enclosed. Special couriers transport the valuable freight within 48 hours directly to the Vita 34 laboratory. Cord blood and tissue are stored exclusively in the Vita 34 tank store in Leipzig.

2

## FOR HOW LONG CAN STEM CELLS BE STORED?

At a storage temperature of approximately minus 180 degrees Celsius, they can be stored for many decades. They do not age, when cryo-preserved, and keep their vital properties.

The storage life of stem cells is presumed to be unlimited. The reason is that the metabolic processes inside the cell stand still almost completely at temperatures of below minus 130 degrees Celsius. Scientists of the FraunhoferInstitute for Biomedical Technology even assume that stem cells from correctly stored cord blood can be stored for centuries.

3

## WHAT HAPPENS WHEN MY CHILD NEEDS ITS OWN STEM CELLS?

As agreed with the doctor in attendance, the transport of the cord blood to the place of the transplantation is prepared. Vita 34 has two mobile stem cell teams available for this purpose. Experienced lab technicians together with the courier will transport the deep-frozen cord blood in a special container to the clinic and prepare its application.

4

## WERE STEM CELLS FROM UMBILICAL CORD BLOOD APPLIED ALREADY?

More than about 6.7 million cord blood preparations worldwide have been prepared for long-term storage upon the parents' private initiative so far. Over 2,000 cord blood products have been released for treatment. Cancer and metabolic disorders or brain injuries, for instance, are treated.

5

## WHEN SHOULD I HAVE DECIDED THAT I WANT TO STORE THE STEM CELLS?

You should have decided that you want to set up a stem cell deposit when the last pregnancy trimester begins. We recommend concluding the contract ten weeks before the birth at the latest in order to organize the necessary things in time beforehand. Should you decide on even shorter notice, please contact our customer service immediately.

6

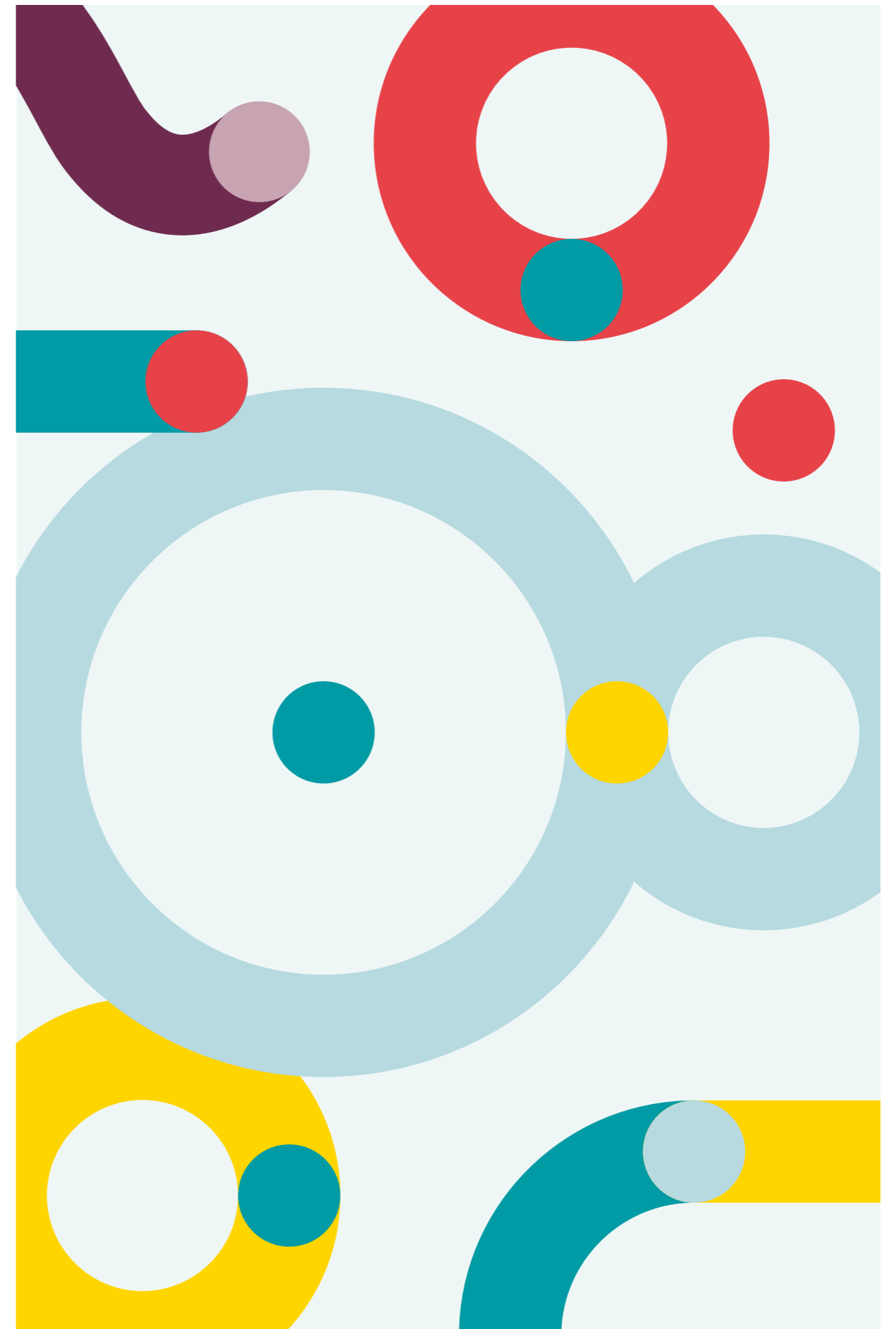
## CAN PARENTS AND SIBLINGS BENEFIT FROM THE STEM CELLS?

In general, yes. The key is that the tissue characteristics have to correspond, as this prevents dangerous rejections after transplantation. The probability that the umbilical cord blood matches the parents unfortunately is only about one percent. There is a probability of 25 percent for siblings that the tissue characteristics match and the cord blood therapy is possible. Stem cells from umbilical cord tissue have the special property of influencing the immune system, which is another advantage regarding the potential use of the preparation within the family. Their use in the treatment of certain diseases not only of siblings, but also parents and even grandparents, is certainly possible.

7

## WHY SHOULD MY CHILD'S HEALTHCARE BE WORTH THIS SPECIAL INVESTMENT?

To offer you a top quality product and the greatest possible safety, we work exclusively according to the highest quality standards. You are provided with the comprehensive complete service by the most experienced and largest provider of the storage of stem cells in the German-speaking countries. Your investment enables us to work economically in the long term. Because your child should rely on us even in 50 years.





The logo for VITA34, featuring the word "VITA34" in a bold, sans-serif font. The letter "i" is lowercase and has a red dot above it. The background of the entire page is a light blue-grey color with large, overlapping, semi-circular shapes in yellow, teal, and maroon.

# PRODUCTS, SERVICES AND PRICES

Find the best and most suitable offer for your needs.



|  | VitaPure                         | VitaPlus                | VitaPlus25             | VitaPlus50             | VitaPureCord                     | VitaPlusCord            | VitaPlusCord25         | VitaPlusCord50         |
|--|----------------------------------|-------------------------|------------------------|------------------------|----------------------------------|-------------------------|------------------------|------------------------|
| <b>STORAGE OF</b>  |                                  |                         |                        |                        |                                  |                         |                        |                        |
| Whole-blood preparation of cord blood  | ✓                                | ✓                       | ✓                      | ✓                      | ✓                                | ✓                       | ✓                      | ✓                      |
| Cord tissue  | -                                | -                       | -                      | -                      | ✓                                | ✓                       | ✓                      | ✓                      |
| <b>METHODS OF PAYMENT</b>  |                                  |                         |                        |                        |                                  |                         |                        |                        |
| One-time contract fee after the birth (VAT included)<br>(195 € thereof to pay as down-payment per child when contract is concluded)    | 990 €                            | 1,990 €                 | 2,695 €                | 3,695 €                | 1,490 €                          | 2,490 €                 | 3,495 €                | 4,995 €                |
| Payment in advance of annual fee   | -                                | -                       | for 25 years           | for 50 years           | -                                | -                       | for 25 years           | for 50 years           |
| Annual fee (VAT included) <sup>1</sup>   | 120 €<br>(as of storage)         | 60 €<br>(as of storage) | 60 €<br>(as of age 25) | 60 €<br>(as of age 50) | 150 €<br>(as of storage)         | 90 €<br>(as of storage) | 90 €<br>(as of age 25) | 90 €<br>(as of age 50) |
| Saving by paying the annual fee in advance <sup>2</sup>  | -                                | -                       | 795 €                  | 1,295 €                | -                                | -                       | 1,245 €                | 1,995 €                |
| Payment method   | Direct debit only                | flexible                | flexible               | flexible               | Direct debit only                | flexible                | flexible               | flexible               |
| Optional financing <sup>3</sup>  | -                                | ✓                       | ✓                      | ✓                      | -                                | ✓                       | ✓                      | ✓                      |
| Minimum 150 € loyalty bonus for another stem cell deposit  | -                                | ✓                       | ✓                      | ✓                      | -                                | ✓                       | ✓                      | ✓                      |
| Special conditions for multiple births <sup>4</sup>  | -                                | ✓                       | ✓                      | ✓                      | -                                | ✓                       | ✓                      | ✓                      |
| <b>TERMS AND PERIODS OF NOTICE</b>   |                                  |                         |                        |                        |                                  |                         |                        |                        |
| Term   | unlimited                        | unlimited               | unlimited              | unlimited              | unlimited                        | unlimited               | unlimited              | unlimited              |
| Cancellation possible  | after 10 years,<br>then annually | annually                | annually               | annually               | after 10 years,<br>then annually | annually                | annually               | annually               |
| <b>PREPARATION AND COLLECTION</b>  |                                  |                         |                        |                        |                                  |                         |                        |                        |
| Professional expert advice and detailed anamnesis by medical experts   | ✓                                | ✓                       | ✓                      | ✓                      | ✓                                | ✓                       | ✓                      | ✓                      |
| Collection kit especially developed by Vita 34   | ✓                                | ✓                       | ✓                      | ✓                      | ✓                                | ✓                       | ✓                      | ✓                      |
| Collection and transport by trained personnel on 365 days a year   | ✓                                | ✓                       | ✓                      | ✓                      | ✓                                | ✓                       | ✓                      | ✓                      |
| <b>STORAGE AND CRYO-PRESERVATION</b>   |                                  |                         |                        |                        |                                  |                         |                        |                        |
| Comprehensive range of manufacturing licenses and permits  | ✓                                | ✓                       | ✓                      | ✓                      | ✓                                | ✓                       | ✓                      | ✓                      |
| Preparation in clean room according to pharmaceutical GMP standard   | ✓                                | ✓                       | ✓                      | ✓                      | ✓                                | ✓                       | ✓                      | ✓                      |
| Comprehensive quality tests (e.g. determination of viability parameters and cell count, infectious disease serology, and microbiology) | ✓                                | ✓                       | ✓                      | ✓                      | ✓                                | ✓                       | ✓                      | ✓                      |
| Off-the-grid long-term storage in the gaseous phase above liquid nitrogen at -180°C  | ✓                                | ✓                       | ✓                      | ✓                      | ✓                                | ✓                       | ✓                      | ✓                      |
| Insolvency insurance for 50 years as of storage  | ✓                                | ✓                       | ✓                      | ✓                      | ✓                                | ✓                       | ✓                      | ✓                      |
| <b>RELEASE AND APPLICATION</b>   |                                  |                         |                        |                        |                                  |                         |                        |                        |
| Family allowance<br>financial support within the scope of cancer therapy <sup>5</sup>  | -                                | ✓                       | ✓                      | ✓                      | -                                | ✓                       | ✓                      | ✓                      |
| Professional processing of the <b>cord blood preparation</b><br>includes repeated testing prior to release                             | ✓                                | ✓                       | ✓                      | ✓                      | ✓                                | ✓                       | ✓                      | ✓                      |
| Mobile stem cell team: Transport of <b>cord blood preparation</b> at no charge<br>to the treatment center in Germany and Austria       | ✓                                | ✓                       | ✓                      | ✓                      | ✓                                | ✓                       | ✓                      | ✓                      |
| Transport of <b>cord blood tissue</b> at no charge<br>to the requesting institution in Germany and Austria <sup>6</sup>                | -                                | -                       | -                      | -                      | ✓                                | ✓                       | ✓                      | ✓                      |

<sup>1</sup> The annual fee is subject to price adjustment as specified in § 5 of the General Terms and Conditions (as at 01/2020)

<sup>2</sup> Saving compared to annual method of payment for VitaPlus and VitaPlusCord

<sup>3</sup> Financing is possible subject to acceptance by the partner bank starting at monthly 33 Euros (e.g.: VitaPlus, term of 60 months via the partner bank), for other financing examples, please refer to [www.vita34.de/angebot/finanzierung/](http://www.vita34.de/angebot/finanzierung/)

<sup>4</sup> In case of multiple births: Discount of 50% (plus annual fee) for the 2nd child; in case of triplets, we bear the full contract fee for the 3rd baby, so that you pay only the annual fee.

<sup>5</sup> If the cord blood is applied within the scope of cancer therapy until your child is 20 years old, Vita 34 will grant you a one-time allowance of 7,000 €. You can use this amount irrespective of the treatment costs covered by your health insurance.

<sup>6</sup> Cord tissue must be processed and prepared according to the applicable standards before any further application. The costs of such processing depend on the type of application, the method, and the required quantity of cells and are therefore not foreseeable at present.



# PRODUCTS

You decide whether you want to have only the **cord blood** or additionally the **cord tissue** and the stem cells it contains stored.



## Umbilical cord blood

**Stem cells from umbilical cord blood** are very young, vital, and very capable of dividing. They are usually free of pathological agents and mostly unpolluted.

---

### PROS

Cord blood is already being applied successfully.

Cord blood is the basis for developing therapies to treat, e.g., brain damage or autoimmune disorders and metabolic diseases.



## Umbilical cord blood and cord tissue

In addition to the valuable stem cells from umbilical cord blood, secure the **stem cells from the cord tissue**, where the concentration of mesenchymal stem cells (MSC) is particularly high. MSC have a great potential for differentiation, thus enabling the development into different types of tissue.

---

### PROS

Benefit from all the advantages of storing cord blood plus the advantages of cord tissue.

Stem cells from cord tissue are the basis for developing tissue replacement therapies (e.g., for arthritis, autism, pulmonary diseases).

[www.vita34.de](http://www.vita34.de)



# METHODS OF PAYMENT

FINANCING  
— AS OF —  
**33 €**  
MONTHLY\*

Opting for the payment methods VitaPlus and VitaPlusCord keeps your options flexible after the storage and you can decide every year whether you want to renew the contract. By means of VitaPure & VitaPureCord, we offer the additional special medical preventive care at a low introductory price. By choosing the payment in advance for 25 or 50 years, you can save up to 1,995 €. Irrespective of the payment method, your contract is in either case unlimited and continues beyond the term paid for in advance.



| Cord blood   | Umbilical cord blood & cord tissue   |
|--|--|
| <p><b>Attractive one-time payment</b></p> <p>No payment in advance<br/>— with VitaPure —</p> <p>one-time<br/><b>990 €</b></p> <p>Annual fee<br/>as of storage 120 €</p>                                  | <p><b>Low annual fee</b></p> <p>Flexible storage period<br/>— with VitaPureCord —</p> <p>one-time<br/><b>1,490 €</b></p> <p>Annual fee<br/>as of storage 150 €</p>   |
| <p><b>Low annual fee</b></p> <p>Flexible storage period<br/>— with VitaPlus —</p> <p>one-time<br/><b>1,990 €</b></p> <p>Annual fee<br/>as of storage 60 €</p>  | <p><b>Low annual fee</b></p> <p>Flexible storage period<br/>— with VitaPlusCord —</p> <p>one-time<br/><b>2,490 €</b></p> <p>Annual fee<br/>as of storage 60 €</p>  |
| <p><b>Save 795 €</b></p> <p>Payment in advance for 25 years<br/>— with VitaPlus25 —</p> <p>one-time<br/><b>2,695 €</b></p> <p>No annual fee for 25 years<br/>(only starting at the age of 25 60 €)</p>   | <p><b>Save 1,245 €</b></p> <p>Payment in advance for 25 years<br/>— with VitaPlusCord25 —</p> <p>one-time<br/><b>3,495 €</b></p> <p>No annual fee for 25 years<br/>(only starting at the age of 25 90 €)</p> |
| <p><b>Save 1,295 €</b></p> <p>Payment in advance for 50 years<br/>— with VitaPlus50 —</p> <p>one-time<br/><b>3,695 €</b></p> <p>No annual fee for 50 years<br/>(only starting at the age of 50 60 €)</p> | <p><b>Save 1,995 €</b></p> <p>Payment in advance for 25 years<br/>— with VitaPlusCord50 —</p> <p>one-time<br/><b>4,995 €</b></p> <p>No annual fee for 50 years<br/>(only starting at the age of 50 90 €)</p> |

\*Financing example – financing is possible subject to acceptance of the partner bank.



# PREVENTIVE SCREENING TEST

COST  
— PER CHILD —  
**+390 €**

The preventive screening test offered by Vita 34 includes testing your child's DNA for genetic dispositions to five selected risks, which may be of importance to your child's health when growing up and which are not included in the customary preventive medical checkups (e.g., neonatal screening).

---

## DRUG-INDUCED HEARING LOSS (ANTIBIOTICS INTOLERANCE)

If the respective genetic disposition is available, the intake of certain antibiotics may cause permanent hearing loss. If the risk is known, doctors may resort specifically to a tolerated antibiotic.

---

## AAT DEFICIENCY (DYSFUNCTION OF THE IMMUNE SYSTEM)

If the enzyme alpha-1 antitrypsin (AAT) is not, not properly, or not at all developed, disorders of the immunometabolism are the consequence. When untreated, lungs and liver may be damaged. If the AAT deficiency is recognized early, AAT medication can be administered and thus possible organ damage prevented.

---

## HEREDITARY FRUCTOSE INTOLERANCE

Bei der hereditären Fruktose-Intoleranz (HFI), handelt es sich um einen angeborenen Defekt des Fruktosestoffwechsels. Schon geringe Mengen Fruktose können bei den Betroffenen schwere gesundheitliche Komplikationen auslösen. Diese sehr seltene Form der Fruchtzucker-unverträglichkeit erfordert eine lebenslange, spezielle Diät, um gesundheitliche Probleme zu vermeiden.

---

## LACTOSE INTOLERANCE (MILK SUGAR INTOLERANCE)

In case of lactose intolerance, the development of the lactase enzyme may reduce, so that milk sugar taken in with food is not absorbed properly and consequently indigestion may occur. If your child is disposed to lactose intolerance, doctors may recommend preventive measures when symptoms appear.

---

## GLUTEN INTOLERANCE (CEREAL FLOUR INTOLERANCE)

Gluten intolerance or celiac disease is an autoimmune disorder, with which gluten, like gliadin in wheat, triggers a chronic disease of the small intestine, which often causes indigestion. We know that 95% of the affected persons have a specific genetic disposition. If this is known, your pediatrician may initiate further diagnostic examinations, when symptoms appear and, if necessary, recommend changing to a gluten-free diet.

You have the right not to acknowledge the test results or parts thereof and to have them destroyed. The testing material will be stored for ten years for a possible verification of the results. The results of the analysis are forwarded by the laboratory to Vita 34 in a confidential manner!

# DONATION OPTIONS



Vita 34 offers you the possibility of combining your own stem cell deposit with a public donation to others. The available options are **VitaMine&Yours** and **VitaPlusDonation**. Both donating options are at no extra cost for you. Vita 34 bears the additional expenses of making the preparation available for donation.

## VitaMine&Yours

When you choose the donating option VitaMine&Yours, Vita 34 will process and prepare one part of the cord blood for your child and the other part of the cord blood for public (allogeneic) donation.

When the required weight is sufficient upon receipt by the laboratory, the collected cord blood will be divided **into two full stem cell deposits**, processed separately and subjected to the necessary tests.

If the preparation is suited for donation, it is stored as a public donation and the pseudonymized data are entered in a public stem cell registry. Thus, your child and others will benefit from the valuable stem cells.

By concluding the contract, you agree that one part of the blood preparation passes into the property of Vita, if the required weight is reached. If the criteria for VitaMine&Yours are not met, Vita 34 processes and prepares the cord blood completely for the individual preventive healthcare of your child.

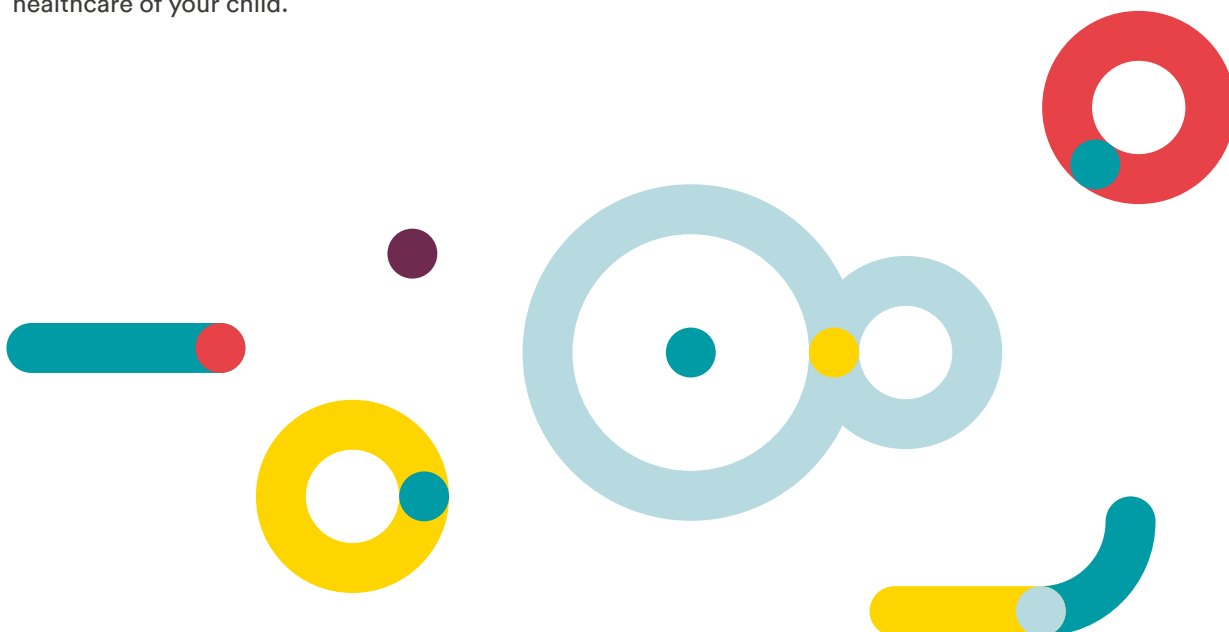
## VitaPlusDonation

When you opt for VitaPlusDonation, your child's privately stored cord blood will be provided additionally for **public donation**.

The whole cord blood is stored as property of your child. If the preparation is suited for donation, the pseudonymized data are entered in a public stem cell registry.

If a suitable recipient needs this cord blood, Vita 34 will ask the legal representatives or the child of full age, whether they want to release the cord blood for transplant (donation) or not. If the legal representative or the child of full age decides in favor of donating the cord blood, the entire preparation is provided for transplantation.

In that case, Vita 34 will reimburse the fees paid so far (plus the average base rate for the past storage period).



# WE ACCOMPANY YOU!



## 1

### BEFORE THE BIRTH

---

- You order our free guidebook for parents-to-be and learn more about the subject of stem cells from the umbilical cord.
- You are advised professionally by experts at no extra charge by calling 0800 034 0000 or writing to kundenservice@vita34.de in Germany; in Austria: 00800 034 00 000, kundenservice@vita34.at.
- You assign us by telephone or online at <https://www.vita34.de/en/order/> to store the umbilical cord blood and umbilical cord tissue. You can also complete the order form enclosed to the guidebook for parents and send it by mail or fax to Vita 34.
- After the contract on the storage of stem cells was concluded, you will be sent the medical history form and the declaration of consent. Complete both, sign them and return them together with a copy of the maternity card or the pregnancy passport to Vita 34.
- Vita 34 sends you the collection kit and with separate post the invoice of the down payment at the amount of 195 Euro.
- Vita 34 informs the clinic that umbilical cord blood and, if applicable, umbilical cord tissue are to be collected.

## 2

### BIRTH

---

- You take the collection kit with you to the clinic.
- After the umbilical cord was cut, the umbilical cord blood and, if applicable, the umbilical cord is collected professionally.

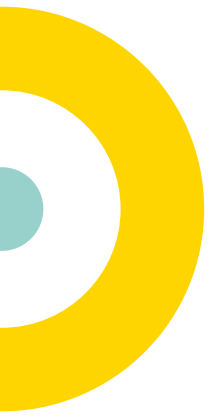
## 3

### AFTER THE BIRTH

---

- The clinic informs the courier. The courier transports the blood, which is rich in stem cells, and the tissue, if collected, to the Vita 34 laboratory.
- Vita 34 cryo-preserved the cord blood and, if collected, tissue.
- Vita 34 sends you the storage certificate, the invoice, and the follow-up anamnesis form.
- You complete the follow-up anamnesis form and return it to Vita 34.
- Vita 34 does comprehensive quality tests of the stored preparations and informs you about the results.





0800 034 00 00

Germany | free of charge

00800 034 00 000

Austria | free of charge

**Vita 34 AG**

Registered office: Deutscher Platz 5a | D-04103 Leipzig

Postal address: Perlickstraße 5 | D-04103 Leipzig

T: 0800 034 00 00 or +49 (0)341 48792-0 | F: +49 (0)341 48792-20

kundenservice@vita34.de | www.vita34.de

**Austria**

Vita 34 Gesellschaft für Zelltransplantate m.b.H.

Hartäckerstraße 28 | A-1190 Wien

T: 00800 034 00 000 oder +43 (0)1 53394-43

kundenservice@vita34.at | www.vita34.at



**VITA34**

